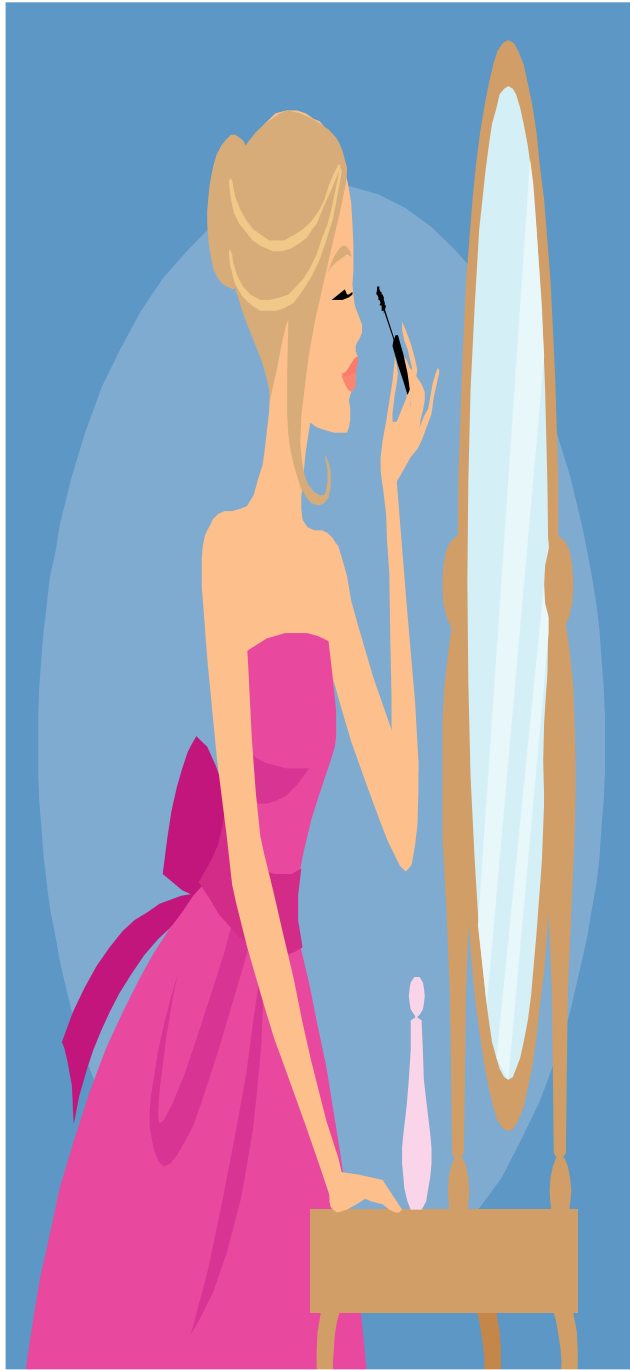


## 2009 Prom Dress Drive

Are you wondering what to do with all those  
PROM & SPECIAL OCCASION DRESSES you hanging in your closet?  
Why not donate them?



### *We welcome all sizes*

Here are some donation guidelines.

Dresses should be:

- from 2002 to present
- clean and on Hangers.
- prom dresses, formal gowns, or fancy party dresses
- received by April 1, 2009

The Prom Dress Drive is part of  
Friend of Scott's Annual "Prom"  
The unforgettable event is for teens  
battling cancer and other  
life-threatening diseases. All dresses do-  
nated will be used by girls who will be at-  
tending the Prom, which is scheduled for  
April 24, 2009

**Don't have a dress donate ?  
How about a \$ 20.00 gift card to Payless**

A HUGE THANK YOU to any help you can offer  
these courageous teens. I promise that the  
Friends of Scott Prom will be a memory that  
lasts a lifetime—however long that may be. If  
you have any questions, please contact me at  
[deanneseiler@cox.net](mailto:deanneseiler@cox.net)

For more information please visit us :  
**Friends of Scott Foundation**  
**Friend to Children with Cancer**  
**[www.friendsofscott.org](http://www.friendsofscott.org)**  
619-741- 3871